

## Bar Code Printing

Bar code label print is fully integrated into the CRIBWARE system. CRIBWARE offers several solutions to meet you label needs depending on the volume of bar code labels to be printed, their size, the alphanumeric characters needed, the media used, and your budget.

Laser printers can successfully print great-looking bar code labels. However, laser printers may improperly scale the bar codes, causing reliability problems. High-resolution laser printers do not print the spaces in bar codes correctly to insure readability.

### QuickPrint for On Demand Label Printing

- Easy, one-step printing
- Print labels on demand
- Print single labels from the various database information screens
- Printing of labels for items, employees, departments, jobs and operations, and machines
- Bar codes optimized for printing 2.25" X .75" or 3" x 1" labels
- Supports only the 3 of 9 bar code symbology

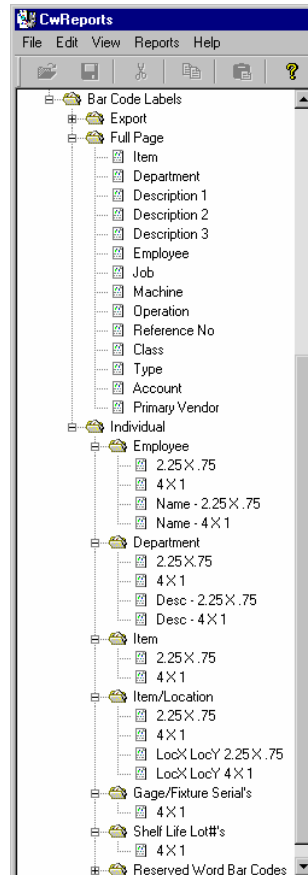
### Advanced Reports for Label Volume Printing

- Print full pages of labels for items, employees, departments, jobs and operations, and machines
- Print individual labels for items, employees, departments, jobs and operations, machines, gage/fixture serial numbers, and shelf life lot numbers
- Bar code printing on 2.25" X .75", 3" X 1" and 4" X 1" media
- Supports only the 3 of 9 bar code symbology

### Bar Code Printers

The Zebra TLP 2844 printer presents big performance in a small package, at an affordable price.

- Direct Thermal and Thermal Transfer capability
- Parallel/Serial/USB interfaces
- Printing speed up to 4" per second, at 300dpi
- Print media from 1" to 4" wide
- Small footprint and reliable operation



©2008 Applied CIM Technologies, Inc. All rights reserved. The information in this document is subject to change without notice. CRIBWARE is a registered trademark of Applied CIM Technologies, Inc. All other product and company names mentioned herein may be the trademarks of their respective owners.