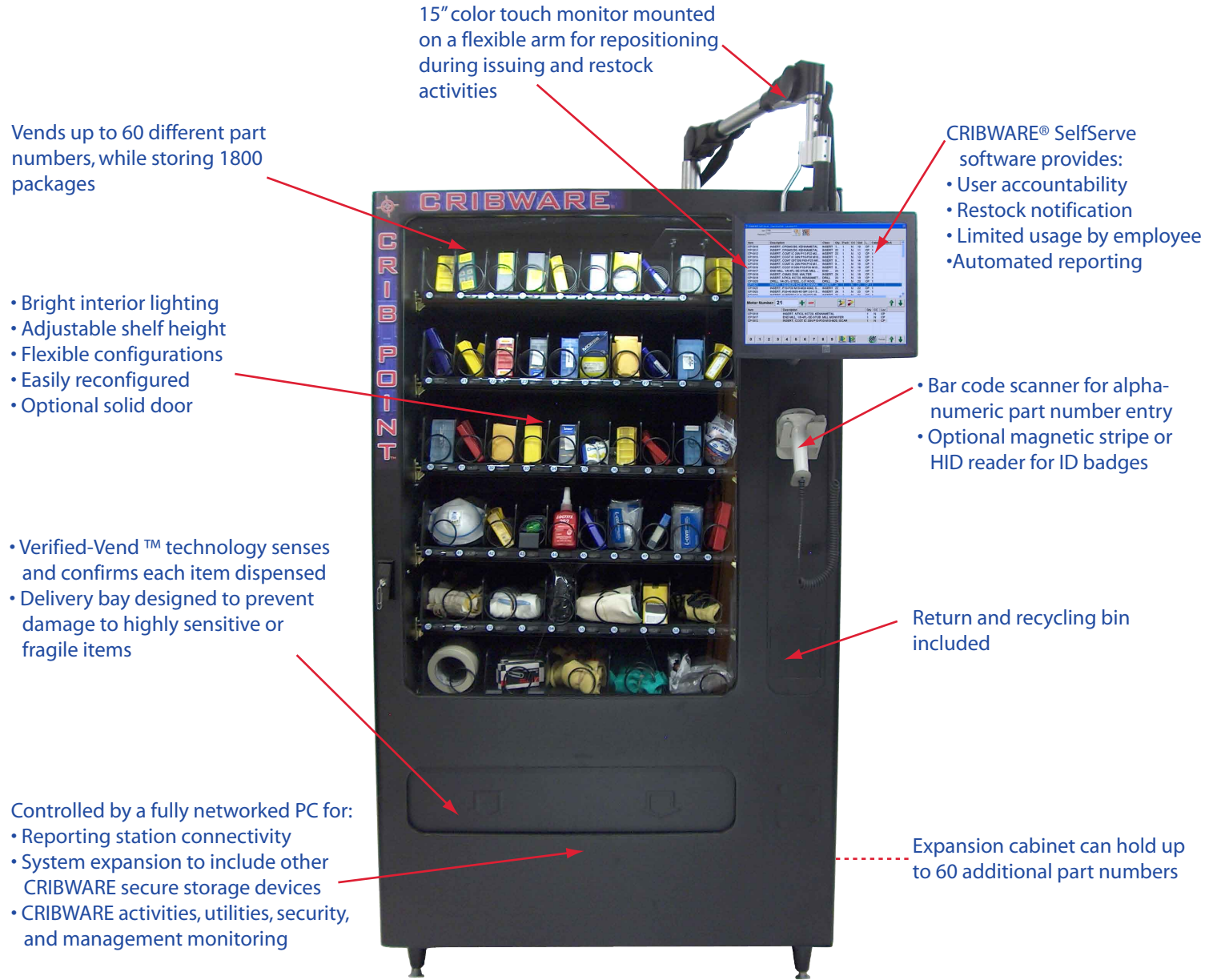


CRIBWARE CRIBPOINT™



CRIBWARE CRIBPOINT BENEFITS

Individual Item Dispensing

Flexible packaging for dispensing usage quantity.

Absolute control

Authorized usage and accountability tracking.

Point-of-Use Availability

Items are stored and available where they are needed and used.

Secure Inventory Storage

Reduces shrinkage and increases security.

7-day, 24-hour Control

Available anytime, controlled all the time.

Single Software Interface

Simple operations reduce training needs.

Networked to CRIBWARE®

CRIBPOINT activity is monitored, controlled and reported by the CRIBWARE system increasing management oversight.

Applied CIM Technologies, Inc.
15200-25th Avenue North
Minneapolis, MN 55447

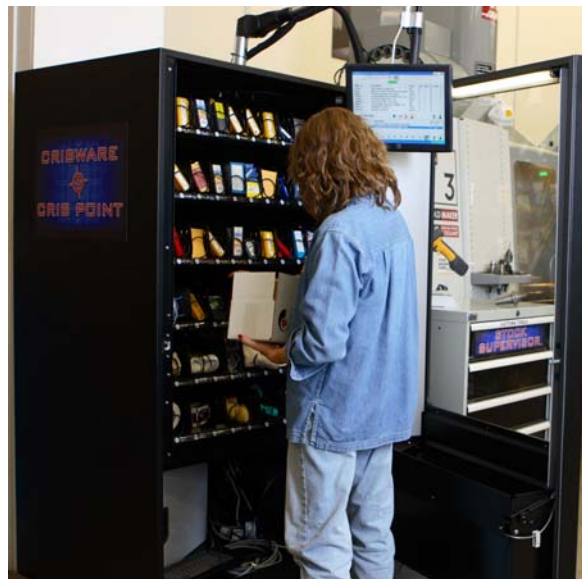
CRIBWARE

Telephone: 763-476-4268
Website: www.cribware.com
E-mail: info@apccim.com

CRIBPOINT Vending

CRIBPOINT Vending is a versatile, rugged, low-cost industrial point-of-use dispensing system for safety supplies, cutting tools, welding accessories and other supplies. More robust and versatile than consumer-grade vending machines, these units work for you 24 hours a day, 7 days a week!

A unique tray design makes reconfiguring the machine a breeze. Helices can be repositioned, exchanged for a different pitch, or even driven in tandem, without tools. Exclusive dispensing aids and adapters enable the issuing of parts with irregular geometry, dramatically reducing the need for repackaging and ensure trouble-free dispensing in even the most challenging industrial environments. A unique easily-reconfigurable helix design provides flexibility that can meet your dispensing needs today and for many years to come.



Features

- Items issued at the point-of-use
- Flexible touch screen positioning for use during restocking as well as issuing
- High volume item control
- Network-ready for flexible positioning in your facility
- Configured to dispense a wide array of products
- Economical and dependable operation
- Vend-validation technology
- Easy to learn touchmonitor user interface
- Bar code reader enabled
- Tracks item consumption
- Reorder/restock notification

Benefits

- **Individual Item Dispensing**
Flexible packaging for dispensing usage quantity.
- **Absolute control**
Authorized usage and accountability tracking.
- **Point-of-Use Availability**
Items are stored and available where they are needed and used.
- **Secure Inventory Storage**
Reduces shrinkage and increases security.
- **7-day, 24-hour Control**
Available anytime, controlled all the time.
- **Single Software Interface**
Simple operations reduce training needs.
- **Networked to CRIBWARE®**
The CRIBPOINT activity is monitored, controlled and reported by the CRIBWARE system increasing management oversight.

CRIBPOINT Vending

Cost Justification

CRIBPOINT Vending solutions provide many opportunities for cost savings and productivity improvements:

- Consumable reduction through usage tracking;
- Stockroom staffing time reduction;
- Point of use availability – reduced walking time;
- Purchase order cost reduction through automatic purchasing;
- Lower expediting costs – online availability of material;
- CRIBWARE optimized replenishment – inventory reduction;
- Management involvement in routine processes, expediting and tool and supply searches eliminated.

Bar Code Technology

CRIBWARE bar code technology offers simple, accurate and cost effective data collection. The wedge barcode reader is an effective tool for entering usernames, passwords and item part numbers.

Vend Validation

Verified-Vend™ technology senses when vends are complete and provides an “electronic nudge” when needed, to ensure proper dispensing.

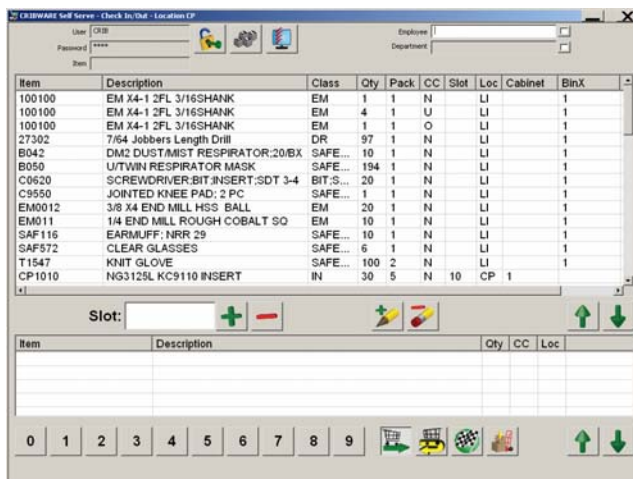
Return Bin

A return bin provides space for recycled material or items to be reworked or reground.

Self Serve Technology

Touch technology simplifies the human/machine interface. CRIBWARE Self Serve reduces operation complexity, simplifies tasks, and reduces training time, while adding more capabilities to the vending machine itself. A large 15” touchmonitor is mounted on a flexible arm, making the touchmonitor available for use in both check out and restock operations. Intuitive Self Serve features include:

- Large buttons and graphical icons;
- Onscreen keyboard permits alphanumeric part numbers and employee codes;
- Optimized bar code scanning;
- Usage history by CRIBWARE tracking parameters;
- Restock and setup at the vending machine;
- Windows-based PC controls all vending machine operations.

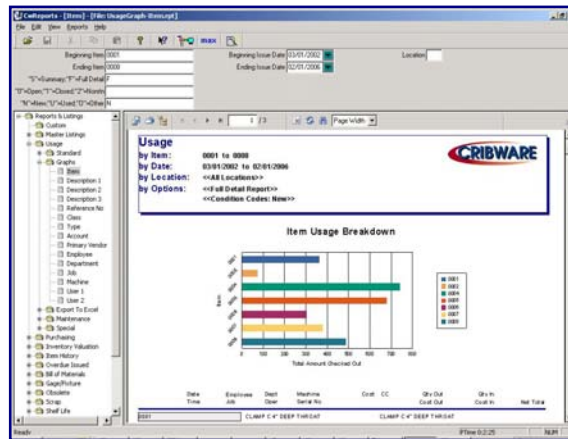


CRIBPOINT Vending

CRIBWARE in Action

- Inventory Control**
Inventory control is the primary component of the CRIBPOINT system, maintaining all item information and inventory balances.
- Restocking**
CRIBWARE maintains all item information and inventory balances, aiding in restock activities. The touchmonitor makes it easy to refill the machine.
- Tracking**
Tracking items on a real-time basis provides item location information, cost and usage accountability. Track items by employee, department, machine, job, operations, work order, work order task, asset and/or two user defined fields. Customize the check out processes for each location to suit organizational needs by selecting one or more tracking parameters and editing the field names.
- Limited Transactions**
Item quantity restrictions can be defined for each CRIBWARE user. This limits the quantity of specific items that can be dispensed in a given time period.
- Courier**
Schedule and automate electronic report transmission via your e-mail program.
- Advanced Reports**
Reporting is an integral part of the CRIBPOINT system. It gives users the tools to report, analyze, document and export CRIBPOINT information. The CRIBWARE Advanced Reports library has over 350 reports, available in a report tree for quick and easy selection. Categories and subcategories narrow the focus within a report group and aid in extracting a detail-rich report. Report examples include:

 - Inventory Valuation: Actual & Average Costs
 - Usage by Tracking Parameter
 - Item by Location
 - Overdue Issued
 - Item History: Summary & Detailed
 - Usage: 12 Month Rolling Average
 - Usage: Item Volume & Vendor Volume
 - Obsolete Inventory
 - Where Used
 - Transferred Items



Customers may include their own company logo on reports and redesign reports to fit their own requirements using the optional Crystal Reports Generator.

- Security**
Each user can be setup with four levels of security for each CRIBPOINT function, restricting access based upon the users' needs.
- Cabinet Configuration and Item Setup**
Cabinet configuration and setup can be done at the vending machine or from a networked computer. The import utility may be used for item setup.
- Utilities**
Import, Export, Database Rebuild and Purge, Remote Price Update, Balance Quantities and Period Closing utilities are included with every system.

CRIBPOINT Vending

Configuration Flexibility

The CRIBPOINT Vending system features an adaptable configuration. Each standard machine can vend up to 60 different items stored in helices. Up to three compartments may be used to dispense an item. A double or triple compartment width subtracts from the standard 60-helix cabinet maximum. Helices are located on trays, with a maximum of 10 helices per tray. Each helix has a number of turns that determine the quantity of items that can be stored in that location.

Example Configurations

The CRIBPOINT Vending solution is completely flexible in its configuration. These units are designed to accommodate a wide variety of different sizes and shapes. They are ideal in areas where a large variety of unique items are to be dispensed. Some of the typical configurations are listed below and include examples of the items that can be dispensed. An auxiliary cabinet is available for storage and vending from up to 60 additional compartments.

Cutting Tools

Cutting tools are relatively small-sized packages and CRIBPOINT can vend up to 60 items. The most effective way to reduce usage, waste, and hoarding of these items is to dispense them in smaller quantities instead of the manufacturer's package.

Gloves

The size and span of the helices are ideal for dispensing most popular glove types and sizes. Cotton, jersey, leather palm, string knit, Kevlar, and latex gloves can all be dispensed. Depending on the size and nature of the glove, you may need to repackage them for dispensing. Many gloves (cotton, latex, string knit) can simply be folded inside out to dispense without problems. However, thicker gloves, such as rubber, leather, and some welding gloves, may require packaging solutions.



Welding Supplies

Welding supplies have a wide variety of shapes. Nozzles can usually be vended without repackaging; however, contact tips are small and can be issued in a range of quantities, so repackaging may be needed. Protection plates and lens covers may require more than one compartment width. Gloves, sleeves, caps and other protection gear are also good vending candidates. Packaging can include everything from a simple plastic bag to a shrink-wrap solution.

MRO

MRO parts are everyday items, which, while having a low to moderate dollar value, have high usage and contribute to the majority of the transactions. These units are designed to accommodate a wide variety of different sizes and shapes.

Batteries

Batteries are everyday items that have a low monetary value but can be critical if not available.

Dispensing Aids

A full line of guides, fixtures and spacers is available to ensure vending of even the most difficult items:

- Widener kits
- Outside risers
- Inside risers
- Tray dividers
- Center drives
- Channel kits
- Helix retainers
- Friction controllers

CRIBPOINT Vending

Options

- **Auxiliary Cabinet**
An auxiliary cabinet adds space for up to 60 additional items. The auxiliary unit uses the touch screen and bar code scanner from the main cabinet and the combination of the two cabinets comprise one CRIBWARE location.
- **7th Tray**
Add a 7th tray to any CRIBPOINT machine for additional space, with up to ten helixes.
- **Extra Tracking Parameters**
The CRIBPOINT software provides usage tracking by employee. Other tracking parameters are also available: machine, department, job, operation, asset, work order, work order task and two customer definable parameters.
- **CRIBWARE Replenishment and Receiving**
Replenish items using order point or max point calculations. The automated replenishment process may include requisitions or purchase orders and receipts can be processed at the machine.
- **Rework/Repair/Scrap Control**
Manage the material workability process; know where your regrinds are.
- **CRIBWARE Setup and Reporting Station**
Setup, change the configuration and run reports on a networked CRIBWARE station connected to the CRIBPOINT Vending machine.
- **CRIBWARE Client Server**
Maximize performance and improve data integrity on large databases running on local area networks.
- **Magnetic Strip and HID Card Reader**
In order to access the vending machine, users must enter a username and password. One method of allowing quick, secure access is using employee badges. Badges might have a barcode, magnetic strip, or be HID encoded. Hardware to read these badges can be added to your CRIBPOINT machine.

Warranty

CRIBPOINT Vending is warranted for 90 days from date of shipment. This warranty includes part replacement and software updates.

Service and Maintenance Program

Technical support is the most important benefit of the Service and Maintenance program. Telephone support is available for operational, procedural and software issues. For more serious or hard to describe issues, our technical support engineer can log onto your computer and remotely solve the issues or explain the correct procedure.

Another benefit of the Service and Maintenance program is the Technical Support Forum. This forum lets current users browse topics of interest or ask questions, interacting with the Applied CIM Technologies staff and other users. Topics include CRIBWARE News Items, Answers to Frequently Asked Questions (FAQ's), Error Codes and Resolutions, and Procedures ("How to" documents). Questions to the online support personnel maybe posted in the Ask for Help section.

CRIBPOINT Vending

CRIBPOINT System Specifications

CRIBPOINT Computer- Internal

Intel P4, or equivalent, processor
 120 GB HDD
 512 MB RAM
 CD or DVD drive
 Network adapter
 Windows XP Professional
 Warranty: 1 year (extended warranty available)
 Wireless keyboard with trackball
 Surge suppressor

CRIBPOINT Vending machine

60 helix standard (70 helix optional)
 6 trays standard (7 trays optional)
 72 in x 41 in x 34.125 in (183cm x 104cm x 87cm)
 Tray weight capacity: 100 lbs (45 kg)
 1,800 item capacity (2,100 optional)
 Shipping weight: 628 lbs. (284.9 kg)
 Electrical Services: 115 VAC/60Hz, 3 Amps (230 VAC/50Hz, 1.5 Amps)
 Warranty: 90 days

15" Color Touchmonitor

Weight: 10.6 lb (4.8 kg)
 Input voltage: 100-240 VAC, 50/60 Hz
 Operating temperature: 32F° to 104°F (0C° to 40°C)
 Operating Humidity range: 20 to 80% non-condensing
 Warranty: 3 year

Corded Linear Imaging scanner

Operating current: 225mA @ 5 VDC
 Temperature rating: 32F° to 113°F (0C° to 45°C)
 Operating Humidity range: 5 to 95% non-condensing
 Shock: withstands ten 5ft (1.5m) drops to concrete
 Water & Dust: Resistant, IEC 60529 rating IP42DW
 Warranty: 5 year

Maximum Product Size

Helix Size = # of Items	Depth	Width	Height	Dual Helix Width	Triple Helix Width
6	3" (7.62cm)	2 ½" (6.35cm)	6" (15.24cm)	5" (12.7cm)	7 ¼" (19.05cm)
7	2 ¾" (5.94cm)	2 ½" (6.35cm)	6" (15.24cm)	5" (12.7cm)	7 ¼" (19.05cm)
8	2 ½" (6.35cm)	2 ½" (6.35cm)	6" (15.24cm)	5" (12.7cm)	7 ¼" (19.05cm)
9	2 ¼" (5.71cm)	2 ½" (6.35cm)	6" (15.24cm)	5" (12.7cm)	7 ¼" (19.05cm)
10	2" (5.08cm)	2 ½" (6.35cm)	6" (15.24cm)	5" (12.7cm)	7 ¼" (19.05cm)
12	1 ½" (3.81cm)	2 ½" (6.35cm)	6" (15.24cm)	5" (12.7cm)	7 ¼" (19.05cm)
15	1 ¼" (3.17cm)	2 ½" (6.35cm)	6" (15.24cm)	5" (12.7cm)	7 ¼" (19.05cm)
18	1" (2.54cm)	2 ½" (6.35cm)	6" (15.24cm)	5" (12.7cm)	7 ¼" (19.05cm)
24	¾" (1.9cm)	2 ½" (6.35cm)	6" (15.24cm)	5" (12.7cm)	7 ¼" (19.05cm)
30	½" (1.27cm)	2 ½" (6.35cm)	6" (15.24cm)	5" (12.7cm)	7 ¼" (19.05cm)

©2008 Applied CIM Technologies, Inc. All rights reserved. The information in this document is subject to change without notice. CRIBWARE is a registered trademark of Applied CIM Technologies, Inc. All other product and company names mentioned herein may be the trademarks of their respective owners.