

# CRIBWARE

## Total Crib Control

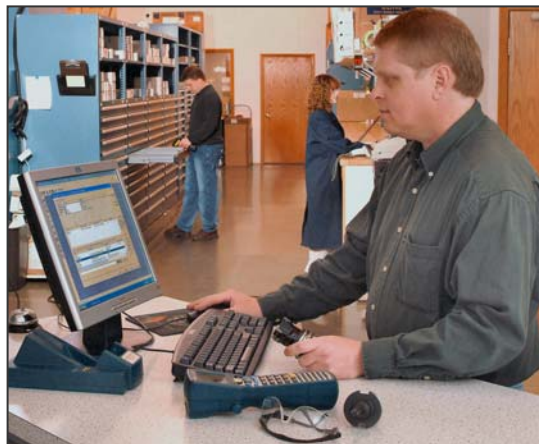


## Total Crib Control

The CRIBWARE® system is a powerful, yet easy to learn, easy to use, comprehensive crib management package. From a few hundred to thousands of items, this scalable, multi-user system provides the functionality and flexibility efficiently streamlining the usage tracking, inventory management and acquisition processes.

### Key Features

- Item identification and classification
- Usage and cost tracking
- Multiple location/multiple bin inventory control
- Replenishment, purchasing and receiving
- New and used visibility
- Scrap and rework accountability
- Item issuing/returning
- Extensive management reporting
- EDI and electronic ordering

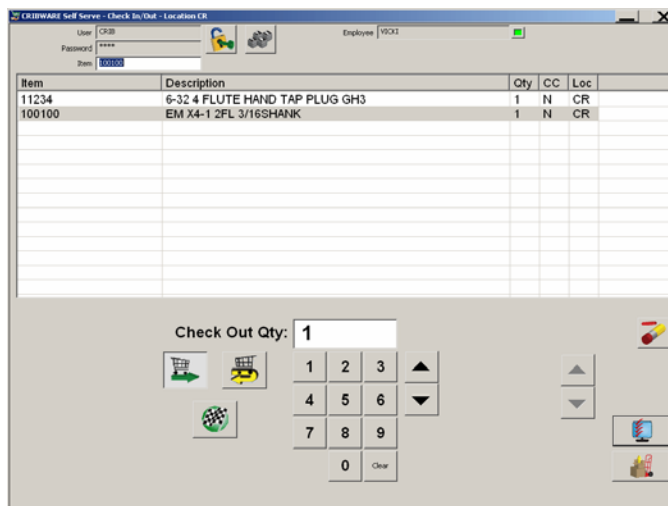


CRIBWARE manages cribs, storerooms, cells, labs and tool rooms

### Why CRIBWARE...

Lowering “hard” costs such as inventory dollars and “soft” costs in administration and purchasing provides a quick return on investment.

- **Replenishment Notification**  
Notification when items are below their reorder point means not having to visually check the bins.
- **Cost Accountability**  
Usage and costs are tracked by employee, job, department, machine, or operation.
- **Automated Purchase Order Creation**  
Orders are automatically created and can be emailed or faxed.
- **Optimal Inventory Levels**  
Min/max inventory control maintains inventory at the proper levels.
- **Total Location Control**  
An item is tracked to its current location.
- **Immediate Information Access**  
Real time access to all inventory, purchasing, receiving and tracking information.
- **Eliminate Stock Outs**  
No more expediting or item substitution.
- **Employee Empowerment**  
CRIBWARE gives employees the tools to do their jobs better.



Self Serve is optimized for bar code scanner usage

# Total Crib Control

## Modularity, Scalability, Concurrent Users

Flexibility is the key to the CRIBWARE system. At any time, add optional functionality and users. Growth, from additional users, added cribs or just more user traffic, is easily accommodated by an industrial grade database manager. A software based license manager counts only concurrent or active users. Part time users can share a single license.

## CRIBWARE in Action

- **Inventory Control**

Inventory control is a primary component of the CRIBWARE system. It maintains all item information and inventory balances, and plans and controls all materials, resources, tools and references needed for your processes. Item set up, Check out, Check in and Vendor selection are the activities performed by this component.

- **Tracking**

Tracking items on a real-time basis provides item location information, cost and usage accountability. Track items by employee, department, machine, job, operation, work order, work order task, asset and/or two user defined fields. Customize the check out/in processes for each location to suit organizational needs by selecting one or more tracking parameters and editing the field names.

- **Replenishment**

Replenish items using order point or max point calculations. A Reorder report can be used for replenishment or passed to other purchasing or administrative systems.

- **Utilities**

Import, Export, Database Rebuild and Purge, Remote Price Update, Balance Quantities and Period Closing utilities are included with every system.

- **Security**

Each CRIBWARE user may be setup with four levels of security for each CRIBWARE function. This security system maintains the integrity of the system and its information by restricting access based upon the users needs.

- **Self-Serve Convenience**

CRIBWARE Self Serve is a designed for ease of use with single purpose screens optimized for bar code usage. It provides check out, check in, receiving and inventory adjustment functions for use in manufacturing cells, storerooms, maintenance departments, tool rooms and other locations that do not have dedicated crib personnel.

The screenshot shows the 'Item Information' window in the CRIBWARE system. It features a tabbed interface with tabs for 'Gage Attr./Tool', 'Notes', 'Tool View', and 'Shell Life'. The 'Gage Attr./Tool' tab is active, displaying various fields for item management. The 'Item' field contains '100100'. The 'Description 1' field contains 'EM X4-1 2FL 3/16SHANK'. The 'Primary Vendor' is 'ACT' and the 'Name' is 'APPLIED CIM TECHNOLOGIES, INC'. The 'Descriptive Information' section includes 'Description 2' (EM 1/8 DIA X 3/8 LGTH C), 'Description 3' (ENDMILL), 'Reference' (EM01250AD037), 'Class' (EM), and 'Type' (RT). The 'System Wide Quantities' section shows 'On Hand' (33), 'In Rework' (1), 'Checked Out' (13), 'Reserved' (0), 'On Order' (0), and 'In Transit' (0). The 'Account' field is 'GI 3400-0010'. At the bottom, there are navigation buttons (First, Prev, Next, Last), 'Clear', 'Delete', and 'Records' (237). Standard 'OK', 'Cancel', 'Apply', and 'Help' buttons are also present.

# Advanced Reports

Reporting is an integral part of the CRIBWARE system. It provides the tools to report, analyze, document and export CRIBWARE information. Advanced Reports use a report tree to organize the report categories and sub-categories. The sub-categories are further broken down using logical criteria to narrow the report focus and extract a detail-rich report.

## Benefits

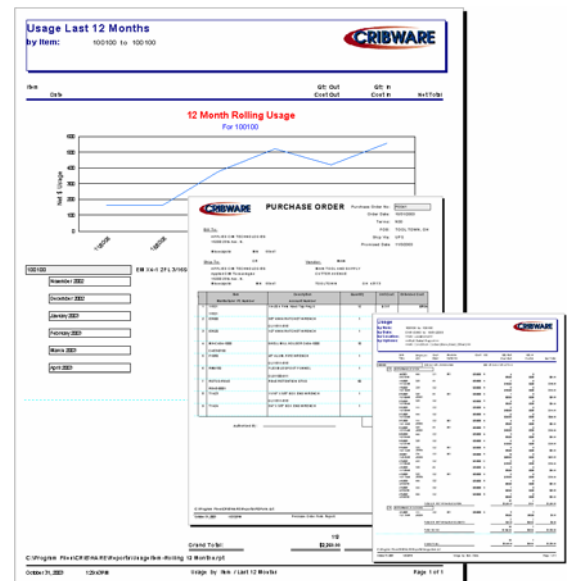
- Management analysis and reporting
- User hard copy documentation
- Reports are created using Crystal Reports, the industry standard format
- View, print, e-mail, or export reports
- Custom tailor reports with corporate logos
- Export information to other corporate systems
- Optional FairCom ODBC driver available for creating or customizing your own reports using Crystal Reports Professional

## Features

- Standard report tree for easy report selection.
- Custom report tree for customer created reports.
- Group tree for quickly moving between the sections of a report.
- Search Text function to find specific words or phrases in completed reports.
- Listing of recent reports for easy reselection.
- Refined selection criteria for more detailed analysis.
- Transmit report information via e-mail.
- Integrated launching of the external application for the export function.
- Export report information in many common business formats, including Adobe Acrobat (PDF), Crystal Reports (RPT), HTML (32. and 4.0), Microsoft Excel, Microsoft Word (RTF), ODBC, comma and tab separated text, record style and XML.
- Print large or small bar code labels.

For self-serve convenience, control codes for switching between the Check out and Check in activities, as well as completing the activity, are available as bar code labels. The bar code label can be placed on documentation, cabinets, computer screens or any place that is easily accessible. The scanning of the appropriate label will activate the software to switch to the selected activity or to finish the transaction.

Description 1	Primary Vendor	Create Date	Last Edit Date	Quantity Purchased Month	Usage Month
Description 2	Account	Last Used Date		Purchase Order Month	Usage Order Month
				Quantity Purchased Year	Quantity Used Year
				Purchase Order Year	Usage Order Year
100000	ACT	7/14/2000	7/14/2000	100	100
EM 1/4 2PL 2-1000000		7/14/2000	7/14/2000	\$3,200.00	\$3,200.00
EM 1/8 DIA X 3/8 LSTX-C		1/10/2004		200	100
				\$4,170.00	\$3,200.00
102000	BAIK	4/11/2000		0	0
4-02 X FLTR WABD TAP PLUG D		7/14/2000		\$0.00	\$0.00
TAP-OTFLD-03		5/10/2000		12	14
				\$33.45	\$41.27
103000	BAIK	6/18/2000		0	0
1-10-24 FLUTE SAND TAP PLUG D		7/10/2000		\$0.00	\$0.00
TAP-OTFLD-03		6/18/2000		0	10
				\$0.00	\$11.70
103000	BAIK	6/18/2000		0	0
1-10-24 6 FWD SAND TAP P		7/10/2000		\$47.16	\$49.30
TAP-OTFLD-03		1/20/2003		12	10
				\$47.16	\$39.00
103000	MASTER	9/20/2007		1	1
TAP-OLLET		4/14/2003		\$220.00	\$30.00
103000		6/28/2000		1	1
				\$220.00	\$30.00
103000	BAIK	6/18/2000		12	12
TAP-OTFLD-03		6/18/2000		\$13.40	\$10.00
				12	12
				\$13.40	\$10.00

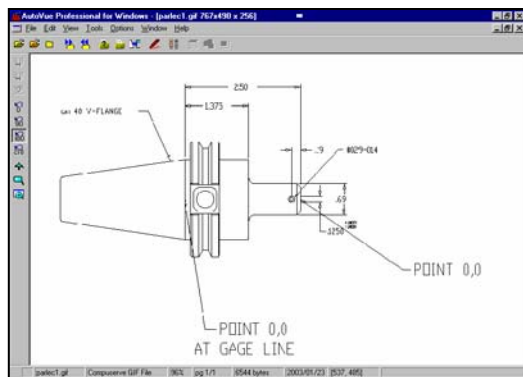


CRIBWARE Advanced Reports

## CRIBWARE Module Selections

Modules and users may be added at anytime to any existing CRIBWARE system.

- **Purchasing and Receiving Automation**  
Automate and insure the replenishment of material.
- **Kitting and Assembly Control**  
Group items for easier and faster issues and returns.
- **Rework/Repair/Scrap Control**  
Manage the material workability process. Know where your regrinds are.
- **Courier**  
Schedule and automate report transmission via e-mail
- **Gage and Fixture Management**  
Incorporate ISO 9000 procedures to provide, automatic calibration scheduling and history.
- **Maintenance Management**  
Manage assets, schedule work orders, and track service activities.
- **Job Management**  
Track job costs, document operations and assure availability of tooling.
- **Shelf Life Management**  
Manage date and lot sensitive material to assure the availability of items performing to specifications.
- **Inventory Adjustment**  
Compensate for human and process errors by cycle counting.



ToolView Online Documentation

- **Stock Transfer**  
Track material transfers between crib locations and document the results.
- **Documents, Pictures, and Drawings**  
View over 120 document types with ToolView, a fully integrated document-viewing module.
- **CRIBWARE Client Server**  
Maximize performance and improve data integrity on large databases running on local area networks.



# CRIBWARE Storage Solutions

## Bar Code Data Collection

CRIBWARE bar code technology offers simple, accurate and cost effective data collection.

- **Bar Code Readers**

Wedge readers (corded and RF scanners) are economical bar code scanners. Cordless scanners are the most common bar code devices sold today.

- **Portable Transaction Managers**

A portable scanner provides roaming flexibility.

- **CRIBWARE Quick Print**

Print bar code labels in one easy step, on demand, or in batch mode, for efficiency.



CRIBWARE is optimized for Bar Coding

## Secure Storage

Secure storage solutions reduce shrinkage, place material closer to the point of use, insure cost tracking and reduce administrative labor in cribs or storerooms.



- **CRIBPOINT Vending**

Versatile, rugged, low-cost, industrial dispensing systems for cutting tools, welding accessories, MRO and other supplies at the point-of-use, with complete usage and cost tracking.

- **Stock Supervisor**

Self-serve convenience with software optimized for items stored in locked Lista cabinets.

- **TDS**

Heavy-duty, unmanned, computer controlled storage and retrieval units individually dispense parts, supplies or cutting tools directly to the user.

- **CRIB-ACCESS**

Secure material with a software-controlled, electromagnetically locked, gate or door to your storage location.

- **Kardex**

Access control, usage tracking and replenishment of material in Kardex Industrier Vertical Lift units can be managed by CRIBWARE software.

- **Remstar**

Use CRIBWARE machine control for usage tracking and replenishment of Remstar Shuttle or Vertical Carousel storage and retrieval units.

## CRIBPOINT Vending

Vending machines are a versatile, rugged, low-cost industrial dispensing system for cutting tools, welding accessories, MRO and other supplies at the point-of-use. More robust and versatile than consumer-grade vending machines, CRIBPOINT Vending works for you 24 hours a day, 7 days a week!

Exclusive dispensing aids and adapters enable the issuing of parts with irregular geometry, dramatically reducing the need for repackaging and ensure trouble-free dispensing in even the most challenging industrial environments. A unique easily-reconfigurable helix design provides flexibility that can meet your dispensing needs today and for many years to come.



### Features

- Items issued at the point-of-use
- Perfect for high volume items
- Network-ready for flexible positioning in your facility
- Configured to dispense a wide array of products
- Economical and dependable operation
- Vend validation technology
- Touchscreen interface easy to learn
- Tracks item consumption

### Benefits

- **Individual Item Dispensing**  
Items can be dispensed as individually or as packages.
- **Point-of-Use Availability**  
Items are stored and available where they are needed and used.
- **Secure Inventory Storage**  
Secure in a rugged cabinet under computer control.
- **7-day, 24-hour Control**  
Available anytime, controlled all the time.
- **Single Software Interface**  
Simple operations reduce training needs.
- **Networked to CRIBWARE**  
The CRIB Point activity is monitored, controlled and reported by the CRIBWARE system.

### Configuration Flexibility

CRIBPOINT Vending is completely flexible in its configuration. These units are designed to accommodate a wide variety of different sizes and shapes. They are ideal in areas where a large variety of unique items are to be dispensed.

Each standard machine can vend up to 60 different items stored in helices and up to three compartments may be used to dispense an item. A double or triple compartment width subtracts from the standard 60-helix cabinet maximum. Helices are located on trays, with a maximum of 10 helices per tray. Each helix has a number of turns that determine the quantity of items that can be stored in that location.

## Stock Supervisor

CRIBWARE Stock Supervisor provides secure and easy access to material stored in Lista cabinets. Utilizing the Lista e-Lock mechanism, the cabinet is unlocked using password control, and automatically re-locks to restrict access. The user quickly scans the items to be removed using a bar code reader, and the CRIBWARE software tracks the material usage, reordering when the stock runs low.

Standard Lista cabinets are available in various heights and drawer configurations to meet unique storage demands and are designed to save space and permit efficient material organization.

### Features

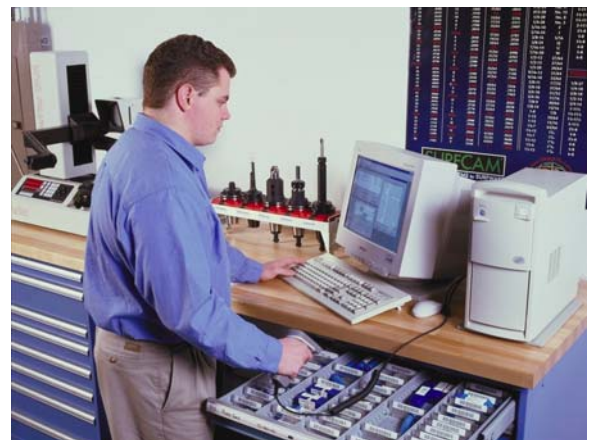
- Cabinet entry requires a password and is tracked by the CRIBWARE software.
- Cost and usage tracking parameters may be used to restrict unlocking cabinetry.
- Cabinet unlocks for item issuing, returning, receiving, restocking and transferring, and locks at the completion of the activity.
- Stock Supervisor controls up to ten cabinets with one master station.
- Existing Lista cabinets may be retrofitted with e-Lock controls.
- Emergency unlock is available.
- Cabinets available in various heights and drawer configurations, with customizable drawer compartments.



A variety of cabinet sizes are available.

### Benefits

- Easy to implement. Easy to learn. Easy to use.
- Reduce shrinkage and increase security.
- Decentralized item control for use on the plant floor in restricted access cabinets.
- Utilize bar code technology to improve accuracy, efficiency, and user acceptance.
- Items are secure until needed and are managed by the CRIBWARE system, providing multi-level security and dynamic reporting capabilities.
- Reduce inventory levels while improving inventory accuracy and accountability.
- Items may be stored at the work center where they are needed.
- Automatic reorder and inventory level management.
- Standard cabinetry with flexible item storage.



Recording what items are taken from the cabinet.



## TDS

TDS units are heavy-duty, unmanned computer controlled storage and retrieval units that individually dispense parts, supplies or cutting tools directly to the user.

### Features

- Items Do Not Drop
- Individual Dispensing and Returning
- Secure Control with Automatic Reordering
- Complete Inventory Control and Accountability
- Stocking and Restocking
- Economical Stocking of up to 1630 Unique Items
- 24 x 7 Availability
- Repackaging is Not Required

Items do not drop! A tray is moved to operator height and a door opens giving access to only the item requested. Items easily

dispensed are hand tools, fasteners, gloves, cutting tools, MRO supplies, safety items, medical supplies, and repair parts.

A user friendly color touch-screen for operator use and CRIBWARE software provide the ultimate in data collection and reporting functions (i.e. who, what, when, where, why) required by today's supply manager.

### Benefits

- **24 x 7, Point-of-Use Availability**  
The item is always available, where it is needed.
- **Positive Inventory Control to Reduce Stock Levels**  
Maintain control over inventory locations and have up-to-the minute information about maximum stock levels, usage history, quantities on hand, and quantities checked out.
- **Avoid Stock Outs**  
Reorder reports flag quantities falling below the set minimums and provide automatic purchasing.
- **Usage and Cost reporting Improves Accountability**  
Capture accurate usage and cost reporting by item, department, job, part, machine, operator, or employee.
- **Return Items**  
Items may be returned and used again.
- **Secure Restocking**  
Multiple vendors can restock and are limited to their specific supplied items.



Choose size and tray configuration



Point of Use availability

### Configuration

TDS models range in capacity from 18 to 163 trays. Each tray can be divided into 10 individual compartments. Several different tray sizes are available.

## CRIB-ACCESS

CRIB-ACCESS provides secure and controllable entry into cribs and storerooms. Utilizing CRIBWARE and an electromagnetic lock mechanism, the crib or storeroom is unlocked using password control, automatically re-locking to restrict access. The user enters the password via an entry device such as a keypad, bar code scanner, or a CRIBWARE screen and exits via a push button. The electromagnetic lock may be installed on doors or gates.

### Benefits

- Access to a crib or storeroom is restricted and entry history is maintained.
- Flexible configuration. Easy to implement.
- Material is secure until needed.
- Provides multi-level security and dynamic reporting capabilities.
- Reduces shrinkage and increases security.
- Utilizes automatic reader technology to improve accuracy, efficiency and user acceptance.
- 24/7 control of cribs and storerooms.



### Features

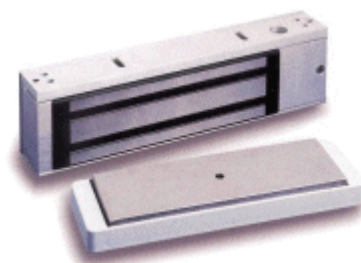
- Entry requires a password and is recorded by the CRIBWARE software.
- Password entry device options include the CRIBWARE screen, keypad or bar code scanner, and magnetic strip and proximity card readers.



- Electromagnetic lock with flexible mounting brackets and 1,500 lbs. of direct holding force.
- Designed for gates and doors.
- Exit Push Button for convenient exiting of room.
- No moving parts – low maintenance.

### Requirements

- A CRIBWARE Basic system configuration system is required.
- Customer is responsible for meeting all safety requirements including all local electrical and building codes.
- Installation to be performed by customer supplied skilled electrical and mechanical craftsmen.
- Entry devices must be dedicated to the CRIB Access function.
- Uninterruptible power supply is required for the Crib Access system.



# Services for Success

## Experience

CRIBWARE was introduced in 1984, in an Iowa machine shop, as one of the first computer-based tool management systems to control, track and manage tools. Over the past two decades, we have introduced many new crib management concepts: kitting, automatic storage and retrieval systems, multi bin/multi location, shelf life, and document viewing. The system is modular, permitting customers to build upon and add functionality, as needed.

Today, CRIBWARE systems are managing material in a diverse group of industries: aerospace, automotive, consumer goods, contract manufacturing, defense, chemical and petroleum refineries, foundries, industrial machinery, job shops and industrial distribution. Some familiar names include General Motors, Eaton, Babcock and Wilcox, U.S. Navy, U.S. Army, Siemens, NASA, Chrysler, ExxonMobil, Ford Motor Company, Toro, Honda Corporation and Parker Hannifin.



Training assures success

We are just as proud of our installations at small and medium sized companies, and pride ourselves in fitting the solution to your specific needs.

We use state-of-the art development tools supported by excellent working relationships with industry leading vendors to ensure quality solutions and services that contribute to the success of our customers. All of our clients, large and small, enjoy our long standing reputation for incredible service and support. Our emphasis is to help you become more efficient and maintain that efficiency.

## Presale Analysis and Cost Justification

Experienced Applied CIM Technologies personnel will assist in the pre-sale analysis and if necessary, prepare a cost justification to ensure a cost-effective solution.

## Installation and Legacy Data

Our technicians are experts in collecting, cleaning, and migrating data from legacy systems to CRIBWARE. The steps in our conversion methodology include a comprehensive data survey, preparation of a conversion and integration strategy, developing and testing data export and import processes, and data validation. Other installation services may include software loading, custom reports, bar code device set up and secure storage installation.

## Training

Training is available at your installation site, an Applied CIM Technologies facility or via the web, and will include technical instruction, set up assistance and hands-on information for daily system use.

## Annual Service Agreement

To ensure ongoing success, an annual service contract is available, providing technical support for operational and procedural questions and problems, software updates ensuring that your company will be running the most current CRIBWARE software and maintaining this competitive technological edge in future years. Technical support is available by telephone and/or email. A web site also provides answers to frequently asked questions and resource documents.

©2008 Applied CIM Technologies, Inc. All rights reserved. The information in this document is subject to change without notice. CRIBWARE is a registered trademark of Applied CIM Technologies, Inc. All other product and company names mentioned herein may be the trademarks of their respective owners.

15200 - 25<sup>th</sup> Avenue North  
Minneapolis, MN 55447  
Telephone: 763-476-4268



Fax: 763-476-1658  
Website: [www.cribware.com](http://www.cribware.com)  
E-mail: [cribware@appcim.com](mailto:cribware@appcim.com)