

Job/Operations

The Job/Operations module provides a means for assigning and tracking quantities of items that are consigned to a job and/or operation, during both Check out and Check in. A Bill of Tooling is then created, providing a genealogy of items and may include kits, assemblies, gages, fixtures, and/or tool items for that job or machine. This provides accountability for the items. In addition, the CRIBWARE usage reports provide the value of tooling checked out or used on a particular job or part.

Once job and part records are created, an unlimited number of operations can be built, and items, kits, or assemblies can then be assigned to each operation. Additionally, with the optional Machine module, jobs or parts can be assigned to a default machine for tracking.

Benefits

- Track material usage by job/operation
- Quick check out and check in
- Reduce material selection errors
- Reduce or eliminate paperwork
- Integrated Bill of Material reports
- Facilitates process standardization of jobs

Features

- Complete CRIBWARE descriptions, searching and reporting
- Unlimited operations per job
- Unlimited items and quantities in the Bill of Materials
- Default machine is selectable
- Online printing of bar code labels
- Comment space is available for both jobs and operations
- Operation notes linked to master documents
- ToolView option for viewing drawings and other supporting documents

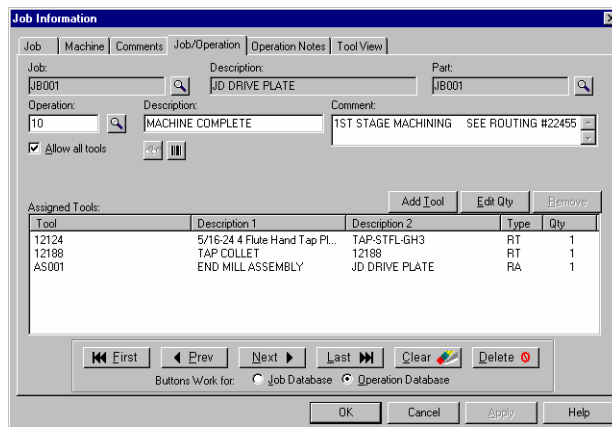


Figure: 04-30.tif

Related Reports

Over 300 reports are available; the following reports pertain to the Job/Operations module.

- Master Job Listing
- Usage by Job
- Where Used
- Job/Operation Items
- Job Start Date

