

Kits/Assemblies

The optional Kit/Assembly module allows the grouping of items into kits and assemblies. This grouping is used for:

- Tracking, assigning, or storing items as a single item number
- Planning usage and referring to the group by one item number
- Reserving tooling and other items when assigned to assemblies
- Easy, quick Check out or Check in by a single part number, when issuing or returning tooling

Benefits

- Quick check out and check in
- Reduce material selection errors
- Reduce or eliminate paperwork
- Integrated Bill of Material reports
- Facilitates process standardization

Features

- Complete CRIBWARE descriptions, searching and reporting.
- Unlimited items and quantities.
- Kits are logical collections of items, tools, gages, fixtures, date sensitive material and assemblies.
- Assemblies are physical collections of items and tools.
- Nominal dimensions for the significant dimensions of a kit or assembly.
- ToolView option for viewing drawings and other supporting documents.

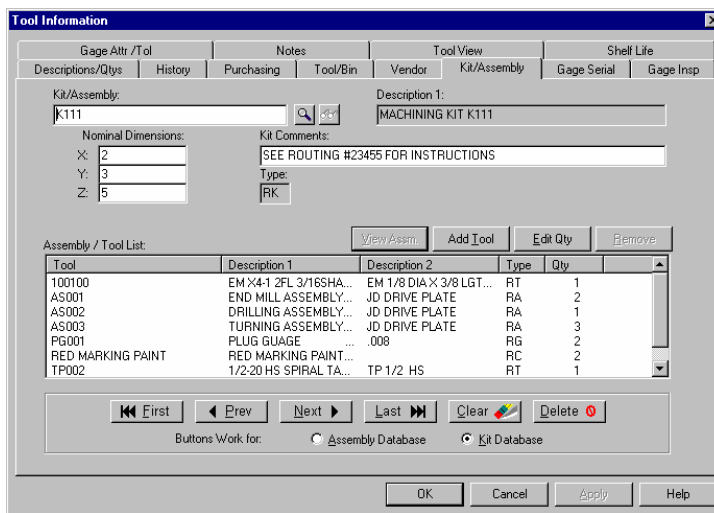
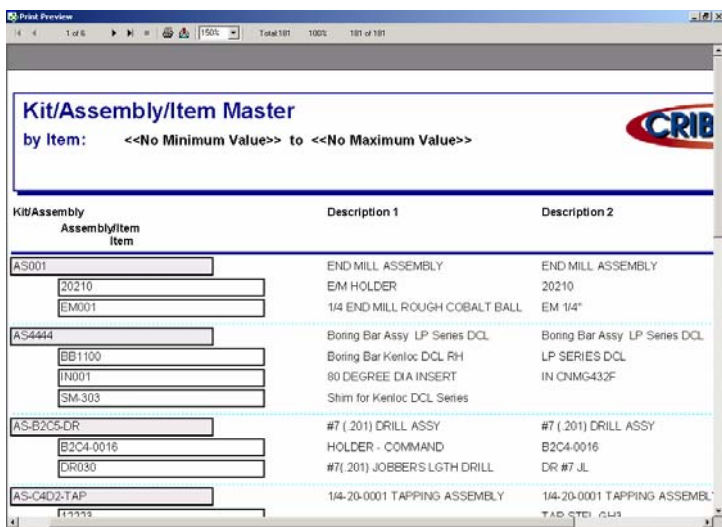


Figure: 04-23.tif



Related Reports

- Kit/Assembly Listing
- Kit Listing
- Assembly Listing
- Where Used
- Job/Operation Items

©2008 Applied CIM Technologies, Inc. All rights reserved. The information in this document is subject to change without notice. CRIBWARE is a registered trademark of Applied CIM Technologies, Inc. All other product and company names mentioned herein may be the trademarks of their respective owners.