

CRIBWARE

Maintenance Management Solutions

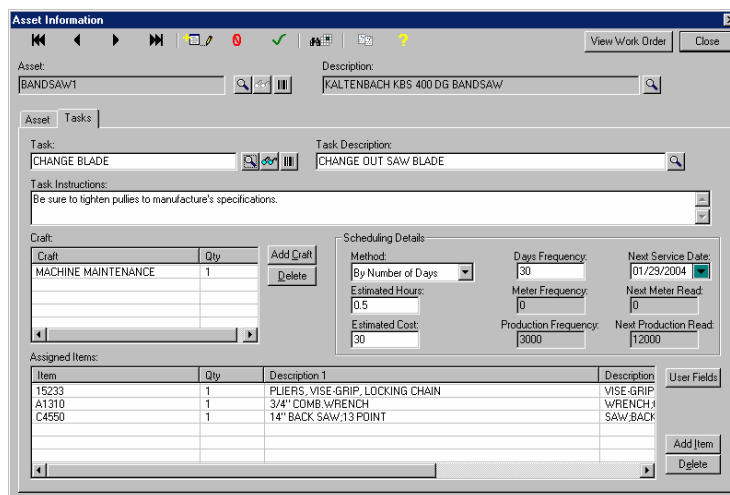


Maintenance Management Solution

Overview

The Maintenance Management module is designed for the management of maintenance activities. This module has Asset Management, Work Order and Task control and scheduling. With Asset Management, a user can identify an Asset, check its status, review service history, and provide maintenance task documentation. The Work Order schedules and documents, maintenance activities to be performed on your assets. A Work Order lists all the tasks needed to complete the activity, specific work instructions, asset documentation, part lists, tool lists and employee craft requirements. Work Orders are scheduled and tracked and are always viewable on the CRIBWARE screen or in report format. This module also manages the craft and employee skill records necessary to efficiently maintain an asset.

The Maintenance Management module is available in multi-user, multi-location configurations and is compatible with the CRIBWARE issuing, receiving, material tracking and inventory control modules for the managing of maintenance materials. Point-of-use dispensing and vending cabinets provide secure material storage. CRIBWARE bar code devices are available for fast, accurate information entry and the ToolView module can be used for the referencing of print, documents and manuals. Features
The CRIBWARE Maintenance Management module incorporates:



- Complete Asset definition and status tracking
- Task templates for easy Work Order creation
- Work Orders include time estimates, parts and tool lists
- Planned and Emergency Work Orders
- Work Order tracking by status
- Work Order scheduling with material requirements
- Online Work Order viewing and printing
- Craft designations and employee assignments
- Scheduling of maintenance activities
- History files on Assets and Work Orders
- CRIBWARE Check out/in for item usage and tracking to the Work Order and Assets
- Management viewing of Work Order status
- CRIBWARE inventory control, purchasing and receiving
- Link maintenance schedules with tools and supplies needed
- Integrated bar code printing and scanning
- Numerous standard reports and a custom report generator
- Security on all software functions
- Online viewing of reference prints, Material Safety Data Sheets (MSDS) and other documents

Total Crib Control

Bar Coding

CRIBWARE bar code technology offers simple, accurate and cost effective data collection solutions.

- **Bar Code Label Printing**
Easy one-step printing, labels may be printed on demand.
- **Bar Code Readers**
Wedge Readers (corded and RF scanners) for economical label scanning. Cordless scanners are the most common bar code devices sold today.
- **Portable Transaction Managers**
A portable scanner provides the needed roaming flexibility.

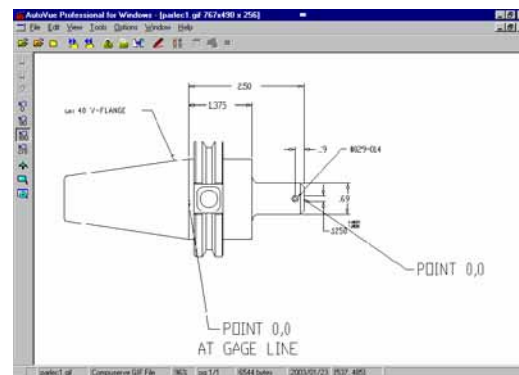


CRIBWARE is optimized for Bar Coding

Additional Software Capability

The CRIBWARE system is modular and scalable-buy only what is needed!

- **Kitting and Assembly Control**
The kitting module provides grouping of items for easier and faster control.
- **Regrind/Rework Control**
Manage the regrind/rework process. Know where your regrinds are.
- **Shelf Life Management**
Manage date and lot sensitive material to assure the availability of items performing to specifications.
- **Job Management**
Use CRIBWARE to track job costs and assure availability of tooling.
- **Gage and Fixture Management**
The CRIBWARE Gage and Fixture Module incorporates ISO 9000 procedures to provide, automatic calibration scheduling and history.
- **Documents, Pictures, and Drawings**
ToolView is a fully integrated document-viewing module.



ToolView Online Documentation

Dispensing Solutions

Connect directly to industry leading dispensing machines, including TDS, vending, locker, and automated storage machines.

System Requirements

The CRIBWARE system requires a minimum of a Pentium III, 600MHz processor, using Windows 2000 or XP Professional operating system, with 256MB RAM, an 800 x 600 color monitor, and a CD drive. A printer is recommended.

Multi-user systems require a standard local area network. The CRIBWARE system provides record locking to ensure data integrity.

Services for Success

Presale Analysis and Cost Justification

The selection of the proper technology and the right configuration is the first step in a successful installation. Experienced Applied CIM Technologies personnel will assist in the pre-sale analysis and if necessary prepare a cost justification to ensure a cost-effective solution.

Database Conversion for Quick Implementation

Applied CIM Technologies has the expertise and tools to convert existing legacy data into useful CRIBWARE information. This conversion process speeds up the installation process and provides for a quick implementation.

Training

Training is available at your installation site, an Applied CIM Technologies facility or via the web, and will include technical instruction, set up assistance and hands-on information for daily system use.

Legacy Data and Installation

Our technicians are experts in collecting, cleaning, and migrating data from legacy systems to CRIBWARE. These steps include a comprehensive data survey, preparation of a conversion and integration strategy, developing and testing data export and import processes, and data validation. Installation services may include: software installation and configuration, hardware installation and troubleshooting, secure storage configuration and product loading, as well as application training.

Service and Support

To ensure ongoing success, an annual service agreement is available, providing technical support for:

- System operation questions and problems
- Crib management procedural questions
- Operating system and networking consultation
- Database procedural questions

Support is offered to our customers via telephone and email. Remote monitoring or dialup service is available for direct access to systems requiring special support or for remote training sessions with the end user. A web site also provides answers to frequently asked questions and resource documents for many common procedures.

Software Updates

The Annual Service Agreement also provides updates to procedural software modules and products, ensuring that your company will be running the most current CRIBWARE software and maintaining your competitive technological edge in future years.

Corporate Profile

History

CRIBWARE was introduced in 1984, in an Iowa machine shop, as one of the first computer-based crib management systems to control, track and manage tools. Over the past two decades, we have integrated many new crib management concepts: kitting, automatic storage and retrieval systems, multi bin/multi location, shelf life, and document viewing. The system is modular, permitting customers to build upon and add functionality, as needed.

Today, CRIBWARE systems are managing material in a diverse group of industries: aerospace, automotive, consumer goods, contract manufacturing, defense, chemical and petroleum refineries, foundries, industrial machinery, job shops and industrial distribution. Some familiar names include General Motors, Eaton, Babcock and Wilcox, U.S. Navy, U.S. Army, Siemens, NASA, Chrysler, ExxonMobil, Ford Motor Company, Toro, Honda Corporation and Parker Hannifin.



Training assures success

We are just as proud of our installations at small and medium sized companies, and pride ourselves in fitting the solution to your specific needs.

We use state-of-the art development tools supported by excellent working relationships with industry leading vendors to ensure quality solutions and services that contribute to the success of our customers. All of our clients, large and small, enjoy our long standing reputation for incredible service and support. Our emphasis is to help you become more efficient and maintain that efficiency.

Staff

The Applied CIM Technologies' staff brings years of practical Tool Crib Management experience, high energy and innovation to its products and services. This staff of computer system engineers, software developers, technicians and trainers, responds quickly to customer needs and the unique requirements of our industry. Applied CIM Technologies uses state-of-the art development tools and is supported by excellent working relationships with industry leading vendors, including Intermec, Symbol, Microsoft, and Cimmetry Systems.

Commitment

Applied CIM Technologies, Inc. is committed to providing quality solutions and services that contribute to the success of its customers. Quality products, service, and support are the backbone of any long-term customer relationship. Applied CIM Technologies' systems, support, and service programs were developed and enhanced to help both small and large organizations become more efficient and maintain this efficiency over the long term.

©2008 Applied CIM Technologies, Inc. All rights reserved. The information in this document is subject to change without notice. CRIBWARE is a registered trademark of Applied CIM Technologies, Inc. All other product and company names mentioned herein may be the trademarks of their respective owners.