

Stock Transfer

The Stock Transfer function allows you to transfer items from one storage location to another. This can be done by entering the items manually, by searching for the item you wish to transfer, or the CRIBWARE application will generate an item restock list that needs to be transferred based upon destination location inventory levels. Gages, fixtures, shelf-life items and kits may not be transferred using this activity.

The module has two methods of transfer: Complete (one-step move) or Send and Receive (two-step move).

- One Step** - This transfer mode performs a complete transfer of item from the source location to the destination location in one step. It decrements the quantity on hand in the source bin locations and increments the quantity on hand in the destination bin locations.
- Send** - This transfer mode performs the first step of a two step move, by removing the item(s) from the source location and increments the In Transit Quantity for the destination location.
- Receive** - This transfer mode performs the second step of a two-part move, by removing the item(s) from the In Transit Quantity and increments the quantity on hand at the receiving location.

Benefits

- Facilitates easy transfer of stock from one location to another location
- Helps maintain accurate inventory records
- Tracks and documents inventory transfers
- Assures accurate usage tracking, a stock transfer does not count as usage

Features

- User has control over bin selection and transfer quantities
- Create restock list will select all items below the restock point for the receiving location
- Manual transfers permitted
- Write transaction records on all inventory transfers
- Maintain New, Used and Other condition categories

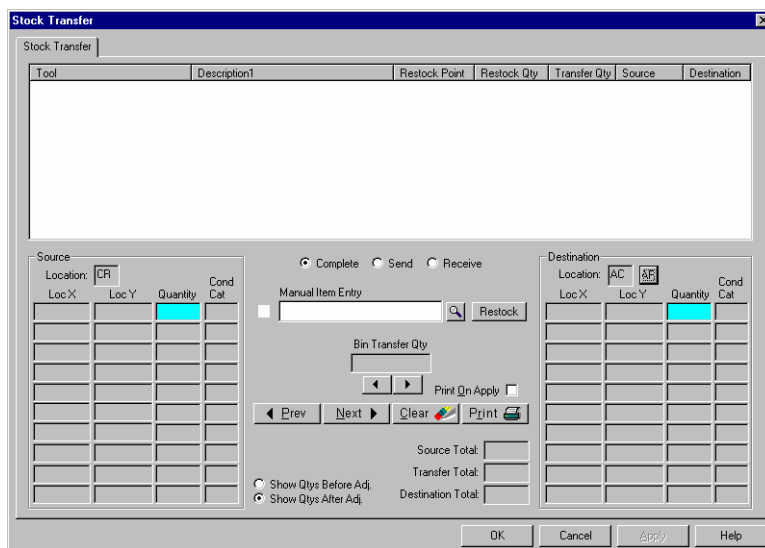


Figure: 08-14.tif

Related Reports

- Transferred Items Report
- Received Items Report
- Crib Restock Report